



MONTHLY MEMBERSHIP PROGRESS REPORT

District 13 OH3

Results as of: 01/31/2018

GMT: CINDY GREGG

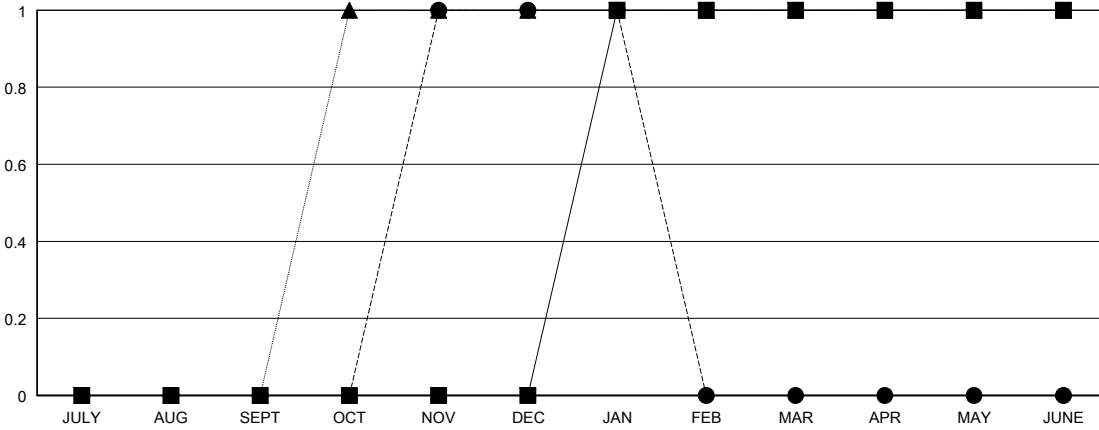
LOCATION OHIO

GMT CA

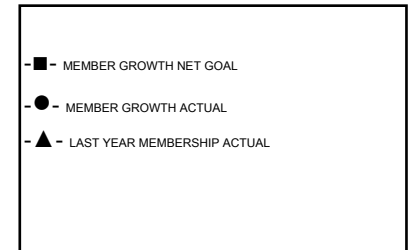
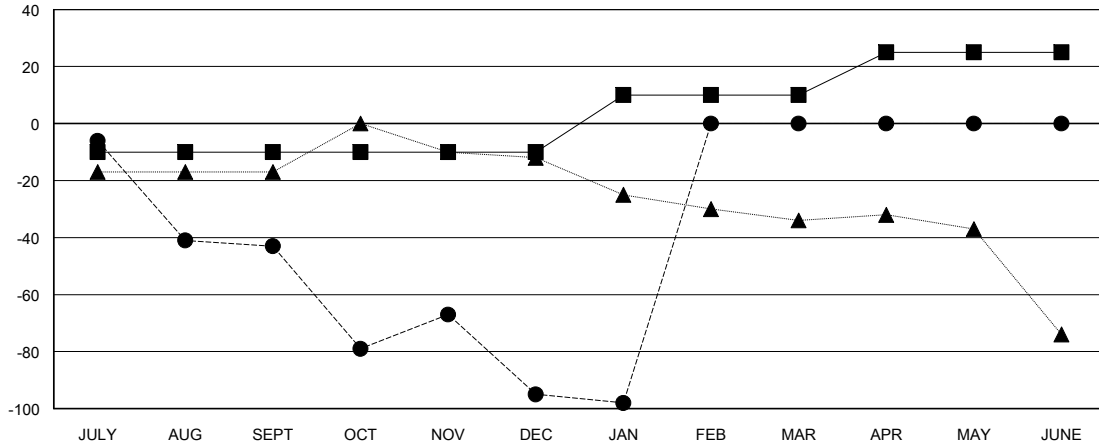
Clubs			
RESULTS FOR 2017-2018			
QUARTER	NEW CLUB GOAL	NEW CLUBS	DROPPED CLUBS
JULY/AUG/SEPT	0	0	0
OCT/NOV/DEC	0	1	4
JAN/FEB/MAR	1	0	0
APR/MAY/JUNE	0	0	0

Members			
RESULTS FOR 2017-2018			
QUARTER	MEMBER GROWTH NET GOAL	MEMBER GROWTH ACTUAL	DROPPED MEMBERS ACTUAL (including transfers)
JULY/AUG/SEPT	-10	25	60
OCT/NOV/DEC	0	67	102
JAN/FEB/MAR	20	10	13
APR/MAY/JUNE	15	0	0

GOALS AND ACTUAL NEW CLUBS CUMULATIVE



GOALS AND ACTUAL MEMBERS CUMULATIVE



DROPPED CLUBS: 4

27 CLUBS OF 62 ADDED 1 OR MORE NEW MEMBERS

GENDER DISTRIBUTION	
MALE	1,088 (68.34%)
FEMALE	504 (31.66%)
Women Percentage Fiscal Year Goal: 32%	

DROPPED MEMBERS	
DECEASED	12
CLUB CANCELLED	38
OTHER	125
TOTAL	175

[CLICK HERE FOR CUMULATIVE MEMBERSHIP DATA](#)

TOTAL FAMILY UNIT MEMBERS	318
FAMILY MEMBERS PAYING HALF DUES	165